

Exogate™ Oversize Tire Carrier Installation Instructions



Tools & Equipment:

- ½ inch socket & driver (extensions can be helpful)
- Phillips head screwdriver
- Small flat screwdriver(s)
- Torx 27 screwdriver or small bit/extension/ratchet (for tire bumper removal)
- Torx 40 bit (early model Wranglers with Torx tailgate hinge screws)
- Torx 45 or 47 bit (for installing the sport bar bracket, size depends on year)
- Torx 50 bit (for adjusting the tailgate striker pin if necessary)
- 3/16" or 5mm Allen wrench (for the tire bumper installation, depending on Wrangler model year)
- ½" open end wrench (for installing the sport bar bracket)
- Automotive detail spray or soap & water (optional, but highly recommended)
- Wax (optional, but highly recommended)

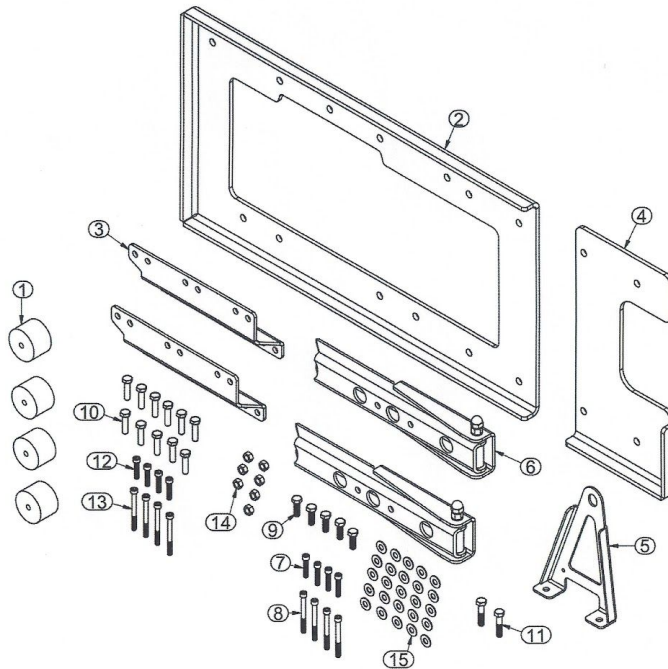
Notes Before Installation:

- A. Read all instructions before beginning installation and identify all parts.
- B. Given that the spare tire and carrier make washing around and behind them difficult, we recommend cleaning and waxing the tailgate as you move through the install process. Spray detailer works well. Some customers have even found little to no paint behind the stock hinges on the tub and/or tailgate.
- C. It is possible, in some configurations, to reuse of the center high mounted stop light (CHMSL), also called the third brake light. Due to the wide variations in backspacing/tire sizes/rim sizes/etc. it is up to the owner to handle any modifications needed or to source/install an alternative.

Exogate Parts:

PARTS LIST

- | | |
|--|---|
| 1. Snubber spacers (use with offset brackets) x4 | 9. 5/16-18 x 1" x5 |
| 2. Tailgate plate x1 | 10. 5/16-18 x 1 1/4" x11 |
| 3. Offset brackets x2 | 11. 5/16 - 18 x 1 1/2" (tub side of top hinge) x2 |
| 4. Tub reinforcement plate x1 | 12. M6-1.0 x 30 Snubber bolts x4 |
| 5. Roll bar bracket x1 | 13. M6-1.0 x 65 Snubber bolts x4 |
| 6. Hinges x2 | 14. 5/16" Nylock nuts x7 |
| 7. 1/4-20 x 1 1/4 Snubber bolts x4 | 15. 5/16" Washers x25 |
| 8. 1/4-20 x 2 1/2 Snubber bolts x4 | |



Disassembly

1. Remove the spare tire from the stock carrier.
2. Unscrew the rubber tire bumpers using a T-27 Torx bit/screwdriver.
3. Open the tailgate and remove the plastic cover on the electrical contacts by removing the Phillips-head screw and prying gently around the edges.



Image 1

4. After making note of which one is on top (if you are planning on reusing the CHMSL) pull the plugs loose from the contacts.

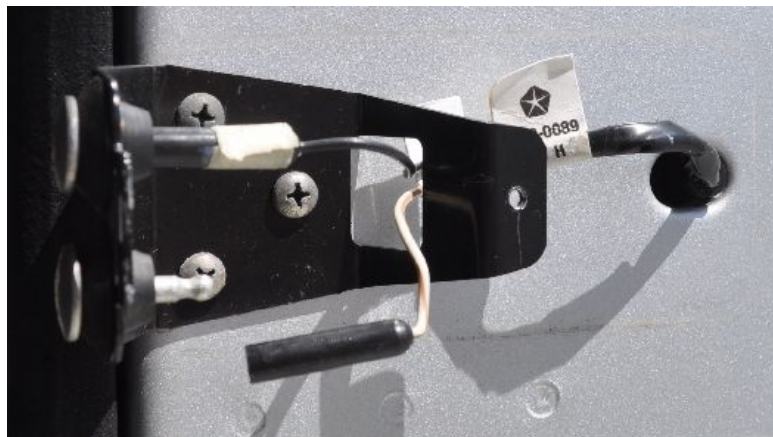


Image 2

5. Squeeze the outside edges of the rubber bushing on the CHMSL wires to push it through tailgate, remove the CHMSL wires.
6. Close the tailgate and unbolt the spare carrier from the tailgate.

Note: be gentle with the covers in this next step if you want to keep the stock pieces. It is possible to break the tabs on the covers if too much force is used. If the cover is not coming off easily, try repositioning the flat-head screwdrivers, don't pry harder.

1. Using small screwdrivers, pry the plastic covers off both sides of the hinges.



Image 3



Image 4

2. With the gate closed/latched, unbolt the factory hinges. The tailgate should stay in place but be careful to support it regardless.

Note: Later models have hex head bolts which require a 1/2" socket; earlier models have Torx flat head screws and require a T-40 Torx bit. (Note on loosening the early model Torx screws - these screws are installed using a thread-locking compound at the factory, and sometimes can be difficult to remove, possibly resulting in stripped Torx heads. If a propane torch is used to heat the screw head for approximately 30 seconds, the thread locking compound can be softened, making the screws much easier to remove.)

Installation:

The Exogate is designed to accommodate many tire sizes. GR8TOPS recommends using the offset brackets for tires greater than 31"x10.5".

Notes:

- You may leave the tailgate latched on the Jeep during installation. However, we have found that removing the tailgate for initial installation of the tailgate plate and offset brackets works well.
- We recommend cleaning and waxing the area under hinges on tub and tailgate
- There are two sets of some hardware for the tire bumpers to account for variations in the different years, identify the correct bolts for your Jeep by testing in the stock holes.

Roll Bar Bracket (part #5)

1. At the passenger side rear corner, pull back the carpet on the inside of the tub to expose the roll bar mount bolts.
2. Remove the inner bolt. (Torx 45 or 47, depending on model year). Note: The seat belt boot may need to be removed to access the bolt).
3. Align the roll bar bracket with the upper hinge holes and the hole for the roll bar

mount you just removed. Reinstall the roll bar bolt but do not tighten.



Image 5: Your bracket may vary slightly but installs just like this

Tub Reinforcement Plate (Part #4)

1. Fit the tub reinforcement plate over the passenger side tail light.
2. Align the top hinge with the holes in the tub reinforcement plate.



Image 6

3. Use the 1 1/2 bolts (part #11), along with washers, for the tub side of the upper hinge, inserting them through the hinge, tub, and roll bar bracket. Do not tighten completely. (1/2" socket, deep well or extension will be needed)



Image 7: 1 1/2" bolts (part #11)

4. Attach the lower hinge to the body using 1 1/4" bolts and washers. Do not tighten completely. (1/2" socket, deep well or extension will be needed)



Image 8

Note: At this point, decide whether to use the offset brackets or not. If your tire size is larger than 31"x10.5", we recommend you use the offset brackets. If not, the tire might not fit on the carrier, as it could hit the bumper.

Tailgate Plate No Offset Brackets

1. Place tailgate on a workbench, exterior side up.
2. Align the holes in the tailgate plate with the hole pattern of the tailgate.
3. Identify the five holes for the spare tire carrier and insert at least two 1 1/4 " bolts to temporarily hold the plate in place (Image 8).

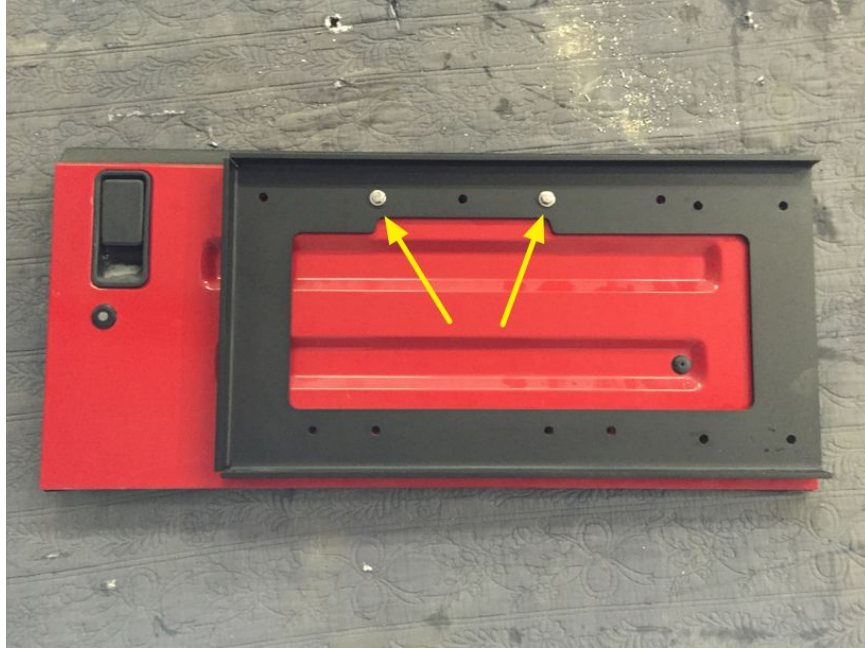


Image 8

4. Place the tailgate back on the Jeep.
5. Install 1 ¼" bolts and washers into the tailgate side of the upper and lower hinges (Image 9). Do not tighten completely. (½" socket, deep well or extension will be needed)

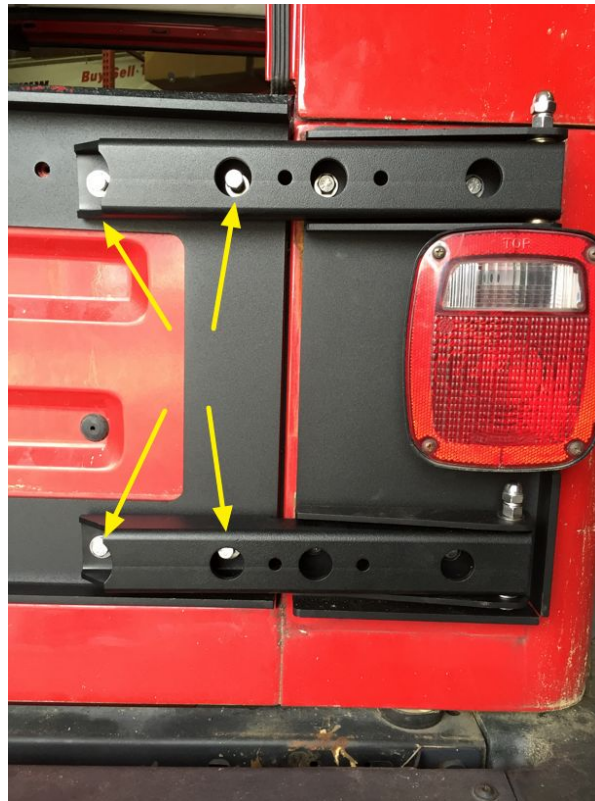


Image 9

6. Remove bolts used to temporarily hold the tailgate plate in place
7. Install spare carrier onto the tailgate plate using 5/16 x 1 1/4" bolts (1/2" socket).
Once carrier is installed all the hardware for the hinges and roll bar bracket can be tightened.



Image 10

8. Skip to the Snubber Install Section

Tailgate Plate With Offset Brackets

1. Place tailgate on a workbench, exterior side up.
2. Align the holes in the tailgate plate with the hole pattern of the tailgate.
3. Identify the five holes for the spare tire carrier. Attach the offset brackets to the tailgate plate and tailgate using these holes (Image 11).

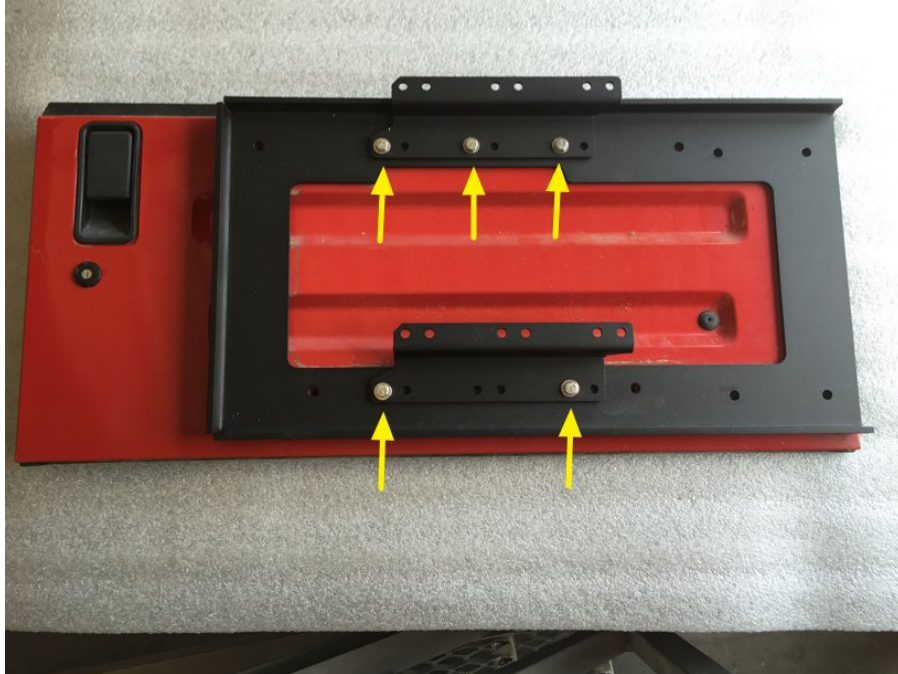


Image 11

4. Place the tailgate back on the Jeep. The tailgate should stay in place, but a helper is recommended to keep the tailgate in place while attaching the hinges.



Image 12

5. Install 1 1/4" bolts and washers into the tailgate side of the upper and lower hinges (Image 13). Do not tighten completely. (1/2" socket, deep well or extension will be needed)

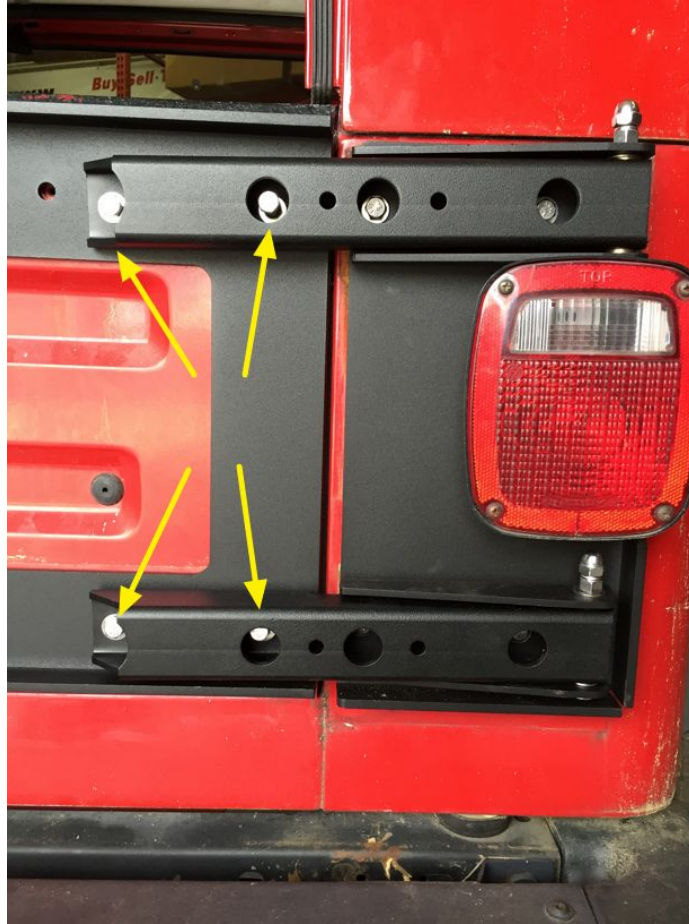


Image 13

6. Install spare carrier onto the offset brackets using (5) - 5/16 x 1" bolts (part # 9) and lock nuts (Image 14). Once carrier is installed all the hardware for the hinges and roll bar bracket can be tightened.



Image 14

7. Install third tail light onto spare carrier and reconnect wiring (due to the new position, wiring may need to be extended)
8. Go to the Snubber Install section

Snubber Install

1. Reinstall spare tire snubber bumpers (Image 15). Spacers and hardware are included to accommodate for the offset brackets. (3/16" or 5mm Allen wrench depending on model year)

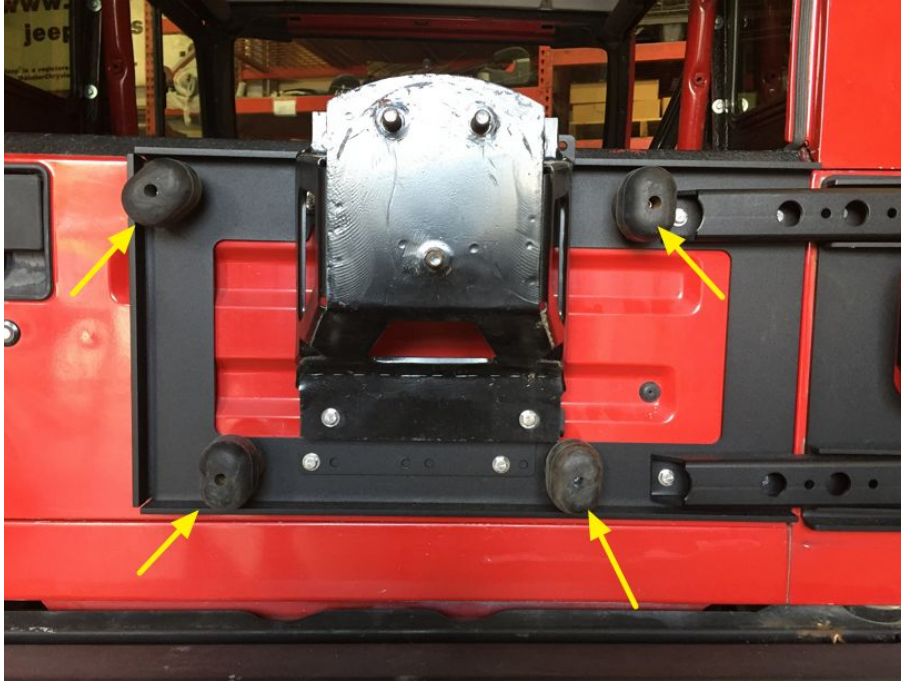


Image 15

Note: The tire bumpers play a key role in reducing the stress on the factory spare carrier by reducing movement of the tire on the carrier, so it is highly recommended that the bumpers be adjusted with spacers as necessary to properly restrict tire movement. (See Image 16). GR8TOPS will not warranty Exogates that do not have proper spacers installed.



Image 16 - Snubber Spacer

Proper snubber installation:



Image 17

Final installation Note:

After installing your spare tire, if you find your tailgate latch now hits the striker pin and will not close, you will need to preload the hinges:

1. Loosen the tailgate hinge bolts but do not remove them.
2. Lift up on the latch end of the tailgate
3. With the end still lifted, tighten the tailgate hinge bolts. A partner may be useful.
4. Retry closing the tailgate. You may have to do this once or twice, but it will work.

Warranty

GR8TOPS warrants our product to be free from defects in material and workmanship for the term of one year, provided there has been normal use and proper maintenance. The remedies under this warranty are limited to the repair or replacement of any item or items found by GR8TOPS to be defective within one year of purchase. This warranty applies to the original purchaser only. All removal, shipping and installation costs are customer's responsibility.

If you have a warranty claim, first you must call GR8TOPS for instructions. You must retain

proof of purchase and submit a copy with any items returned for warranty work. Upon completion of warranty work, if any, we will return the repaired or replaced item or items to you freight prepaid. Damage to our products caused by accidents, fire, vandalism, negligence, misuse, Acts of God or by defective parts not manufactured by us, is not covered under this warranty. Repaired or replaced items are considered part of the originally purchased item and does not extend the warranty coverage.